

JASON C. STEBBINGS

Jason@Worldfade.com
Worldfade.com
Los Angeles and Chicago
847 414 2450

SET DESIGN

- 'American Eagle', 2020
Red Truck - Commercial
- 'Sprite Ginger', 2020
Red Truck - Commercial
- 'Starz FYC', 2019
Whalefilm - Pop-Up exhibit
- 'MAC Cosmetics', 2018
Vision Scenery - Product event
- 'Google Cloud LA', 2018
Whalefilm - Product launch

PRODUCTION DESIGN

- 'His Only Son', 2019
Rock Bridge - Period feature film
- 'Avil', 2019
USC Thesis - Short film
- 'Kirby & Hitch', 2018
Kid's live puppets - TV Pilot
- 'Love of the Father', 2017
168 Film Festival - VR short film

ART DIRECTION

- 'Pugent Sound', 2019
Fictitious - Commercial
- 'Christmas Under Wraps', 2014
Hallmark - TV movie
- 'Star vs. the Forces of Evil', 2014
Asst. AD Disney XD - TV animated series

GRAPHIC DESIGN

- 'GOTTI', 2017
EFO Films - Feature film
- 'Ouija: Origin of Evil', 2016
Blumhouse Productions - Feature film

ART DEPARTMENT

- '#REALITY HIGH', 2017
Netflix - Feature film
- 'Chasing Life', 2015
ABC - TV series
- 'Jane the Virgin', 2014
CBS - TV series
- 'The Voice', 2012
NBC - TV series

EDUCATION & EXPERIENCE

Bachelor of Fine Arts, Industrial Design
University of Illinois - Champaign, Illinois
Talented Student Tuition Waiver, Dean's List

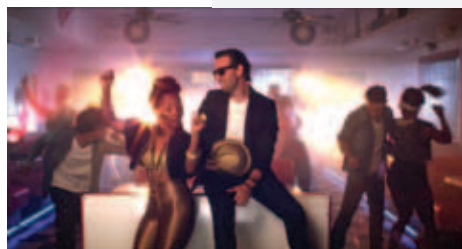
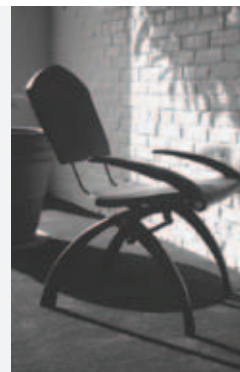
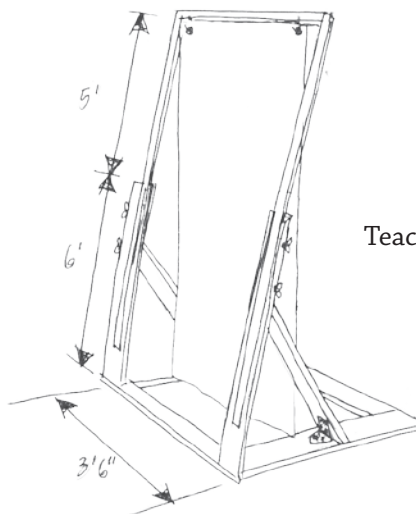
Consortium Studios
CAD Designer, 2012

Pepsi Bottling Group
Illustrator, 2009-2011

Escuela Caribe
Jarabacoa, Dominican Republic
Teacher / Media Designer, 2002-2007

Club Med
Set Designer, 2001-2002

Chicago Kitchen & Bath
Creative Director, 1998-2000



Hand Drafting
Scale Models
Concept Art
Photoshop
Illustrator
InDesign
Final Cut
PowerPoint
Vectorworks
SketchUp Pro

